

Radio Communication Failure

If radio communication fails in flight with FPL filed for entry into the Poznań/Ławica CTR, with destination other than Poznań/Ławica AD, before reaching the Poznań/Ławica CTR limits, entry is forbidden.

If radio communication fails in flight with destination Poznań/Ławica AD, before reaching or within the Poznań/Ławica CTR limits, the crew shall:

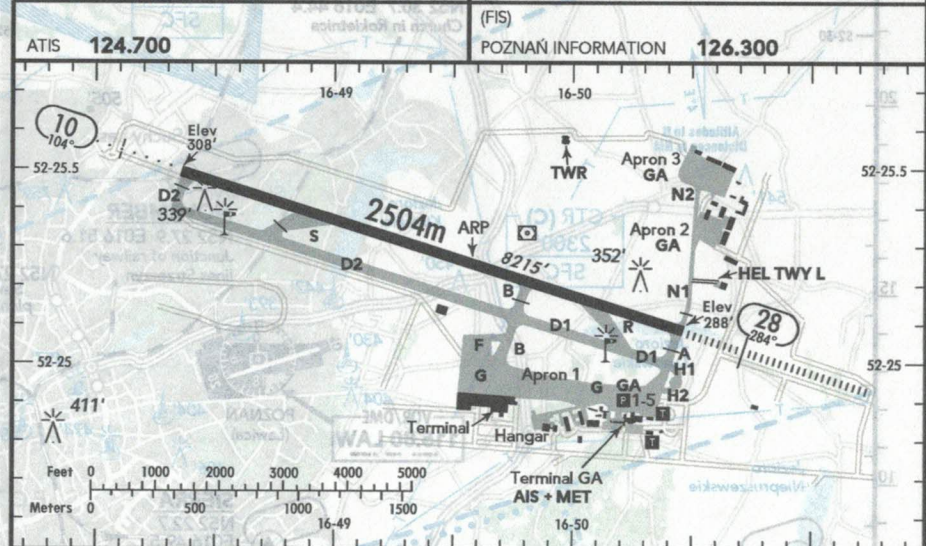
a) when approaching from the northern side of the AD:

- make APCH to reach NOVEMBER and expect visual signals given from TWR of Poznań/Ławica;
- show all ACFT navigation lights during ARR, APCH, and holding;
- after receiving green visual signal execute the shortest possible APCH and land on the most suitable RWY depending on weather conditions;
- after receiving a red visual signal hold over NOVEMBER until receiving a green visual signal and then execute shortest possible APCH and land on the most suitable RWY depending on weather conditions;
- if no signals have been received from TWR, hold over NOVEMBER for 5 MIN and then execute the shortest possible APCH and land on the most suitable RWY depending on weather conditions;
- after LDG vacate RWY immediately into the first possible TWY and wait for the FOLLOW ME car.

b) when approaching from the southern side of the AD:

- SIERRA is unavailable;
- fly to CHARLIE or TANGO by passing Poznań/Ławica CTR and Krzesiny MCTR/MATZ;
- make an APCH to reach NOVEMBER and follow the procedure described above.

NOTE: The MAX holding altitude shall be 1000' unless ATC instructs otherwise.



ALS - PAPI 10 - THRL - RL - TWYL - APRON - WDI - OBSTL.

RWY No	Dimension (m) - Surface	TORA (m)	LDA (m)	Strength	Lights
10 28	2504 x 50 Concrete/Asphalt	2504	2504	PCN 56/F/B/W/T	

Stands 1-5 on Apron 1 are designated for GA ACFT (code "A" and "B" ACFT).
Apron 2 and Apron 3 are designated for GA ACFT based in hangars (code "A" ACFT).

Due to poor technical condition Apron 2 is CLSD excluding designated TWY leading to/from hangars.

10 MIN prior to being ready for push-back or start-up, the flight crew shall contact POZNAŃ DELIVERY for ATC clearance and report the following details:

- ACFT call sign,
- parking stand number,
- destination AD,
- planned cruising level (if other than in FPL),
- any changes to the flight plan.

HEL perform LDG on RWY.

Poznań/Ławica CTR Entry

Entry into controlled airspace from uncontrolled airspace:

Entry into the CTR may be performed upon clearance issued by POZNAŃ TOWER and received from POZNAŃ INFORMATION.

If not instructed otherwise by the POZNAŃ INFORMATION, radio communication with POZNAŃ TOWER shall be established 5 MIN before reaching NOVEMBER or SIERRA and over WHISKEY in case clearance for entry into Krzesiny MCTR/MATZ has not been issued previously.