

N51 14.4
E022 42.8

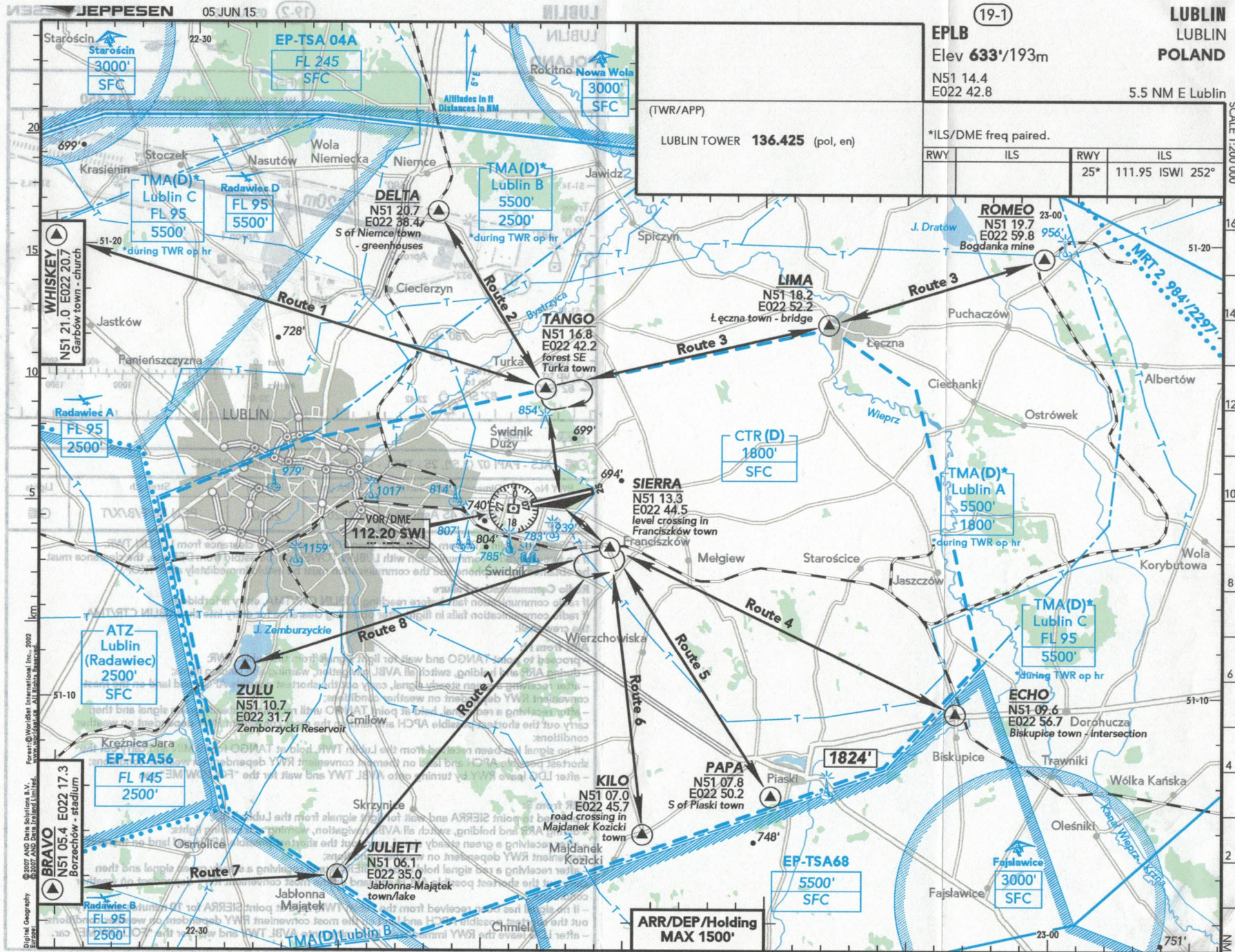
5.5 NM E Lublin

TWR/APP

LUBLIN TOWER **136.425** (pol, en)

*ILS/DME freq paired.

RWY	ILS	RWY	ILS
		25*	111.95 ISWL 252°



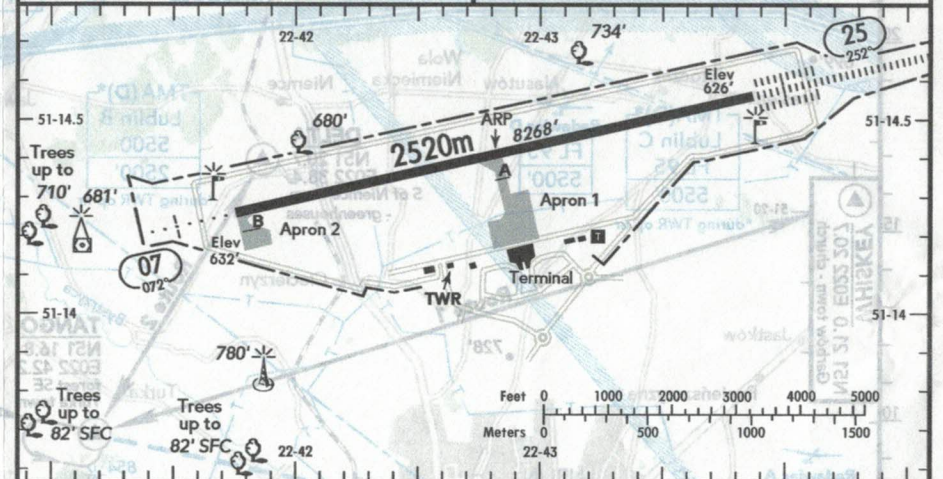
LUBLIN LUBLIN POLAND

19-2

05 JUN 15

JEPPESSEN

(FIS)
WARSAWA INFORMATION 119.450



RWY No	Dimension (m) - Surface	TORA (m)	LDA (m)	Strength	Lights
07 25	2520 x 45 Asphalt	2520	2520	PCN 50/F/B/X/T	

TKOF within Lublin CTR from a site other than EPLB is subject to clearance from LUBLIN TWR.
If no two-way radio communication with LUBLIN TOWER can be estbld from DEP site, the clearance must be obtained by telephone and the communication must be estbld immediately after TKOF.

Radio Communication Failure
If radio communication fails before reaching LUBLIN CTR/TMA, entry is forbidden.
If radio communication fails in flight after obtaining clearance for entry into the LUBLIN CTR/TMA, the crew shall:

ARR from N:

- proceed to point TANGO and wait for light signals from the Lublin TWR;
- during ARR and holding, switch all AVBL navigation, warning and landing lights;
- after receiving a green steady signal, carry out the shortest possible APCH and land on the most convenient RWY dependent on weather conditions;
- after receiving a red signal, hold at point TANGO until receiving a steady green signal and then carry out the shortest possible APCH and land on the most convenient RWY dependent on weather conditions;
- if no signal has been received from the Lublin TWR, hold at TANGO for 10 MIN and carry out the shortest possible APCH and land on the most convenient RWY dependent on weather conditions;
- after LDG leave RWY by turning onto AVBL TWY and wait for the "FOLLOW ME" car.

ARR from S:

- proceed to point SIERRA and wait for light signals from the Lublin TWR;
- during ARR and holding, switch all AVBL navigation, warning and landing lights;
- after receiving a green steady signal, carry out the shortest possible APCH and land on the most convenient RWY dependent on weather conditions;
- after receiving a red signal hold at point SIERRA until receiving a steady green signal and then carry out the shortest possible APCH and land on the most convenient RWY dependent on weather conditions;
- if no signal has been received from the Lublin TWR, hold at point SIERRA for 10 minutes and carry out the shortest possible APCH and land on the most convenient RWY dependent on weather conditions;
- after LDG leave the RWY immediately by turning onto AVBL TWY and wait for the "FOLLOW ME" car.