

AIRCRAFT PARKING/DOCKING CHART - ICAO

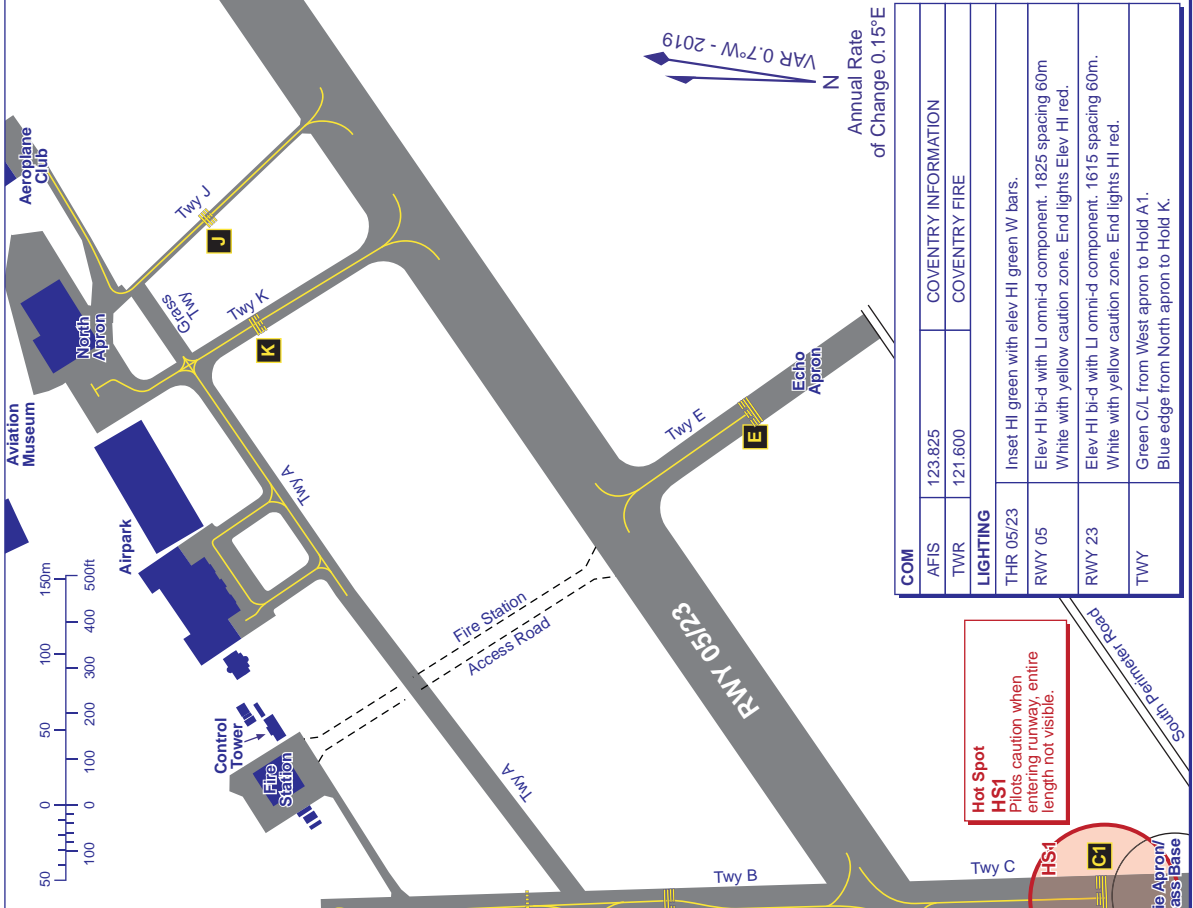
ARP 522211N 0012847W

AD ELEV 267FT

COVENTRY EGBE

RUNWAY/TAXIWAY/APRON PHYSICAL CHARACTERISTICS	BEARING STRENGTH
APRON / RWY / TWY	SURFACE
RWY 05/23	Asphalt
Air-Lock Apron	Asphalt
Bravo Apron	Concrete
Charlie Apron	Asphalt
Dakota Apron	Asphalt
Echo Apron	Asphalt
Hangar 4 Apron	Asphalt
West & Northern Apron	Asphalt
Eastern Light Apron	Grass
Twy A (Twy B to airpark)	Grass
Twy A (Airpark to Twy K)	Asphalt
Twy A (Twy K to J)	Grass (15m)
Twy A (West to Twy B)	Asphalt
Twy A (Rwy to West)	Asphalt
Twy B (Rwy to hold B1)	Asphalt
Twy B (hold B1 to B2)	Asphalt
Twy B (Bravo Taxi lane)	Asphalt
Twy C	Asphalt
Twy E	Asphalt
Twy J	Grass/5m Asphalt
Twy K	Asphalt

STAND	COORDINATES
1	522217.66N 0012858.71W
2	522202.04N 0012920.19W
3	522201.48N 0012919.59W
4	522200.93N 0012919.00W



COM	COVENTRY INFORMATION
AFIS	123.825
TWR	121.600
LIGHTING	
THR 05/23	Inset HI green with elev HI green W bars.
RWY 05	Elev HI bi-d with LI omni-d component. 1825 spacing 60m. White with yellow caution zone. End lights Elev HI red.
RWY 23	Elev HI bi-d with LI omni-d component. 1615 spacing 60m. White with yellow caution zone. End lights HI red.
TWY	Green C/L from West apron to Hold A1. Blue edge from North apron to Hold K.

CHANGE (10/18): STANDS 23/24/25/34. REDESIGNATED 4/3/2/1. STANDS 31A/31B/32A/32B/33A/33B REMOVED. TAXIWAY/LEAD-IN LINES/HOLD E REINSTATED. APRONS DESIGNATED. CHARACTERISTICS BOX.